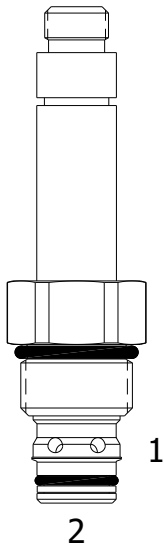


**HDE-S2A PILOT OPERATED POPPET, 2 WAY NORMALLY CLOSED**

**DESCRIPTION**

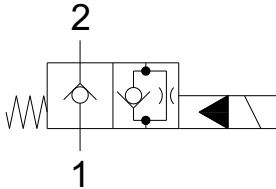
"High Pressure", 10 size, 7/8-14 thread, "Delta" series, solenoid operated, 2 way normally closed, pilot operated poppet valve with reverse flow de-energized.

**OPERATION**

When de-energized, the HDE-S2A blocks flow from (1) to (2) and allows reverse flow from (2) to (1). When energized, the valve allows flow from (1) to (2) and restricts flow from (2) to (1).

**FEATURES**

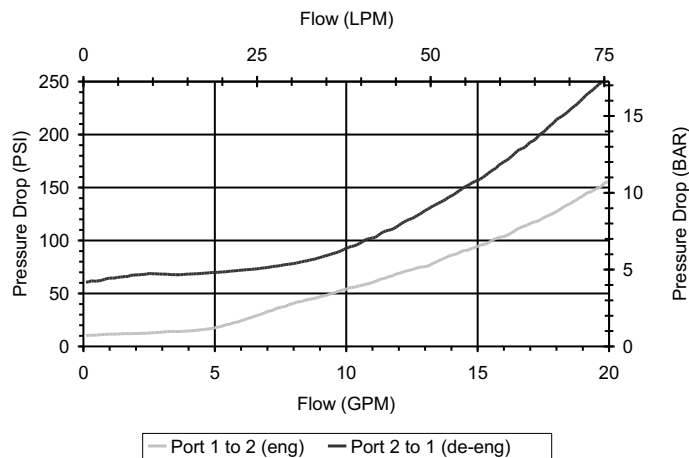
- Hardened parts for long life.
- Efficient wet-armature construction.
- Cartridges are voltage interchangeable.
- Industry common cavity.
- Unitized, molded coil design.
- Continuous duty rated solenoid.
- Optional coil voltages and terminations.
- Optional "I" Coil: Weatherproof, Thermal Shock, Immersion Safe.

**HYDRAULIC SYMBOL**


Uses "L" Coil or "LI" Coil

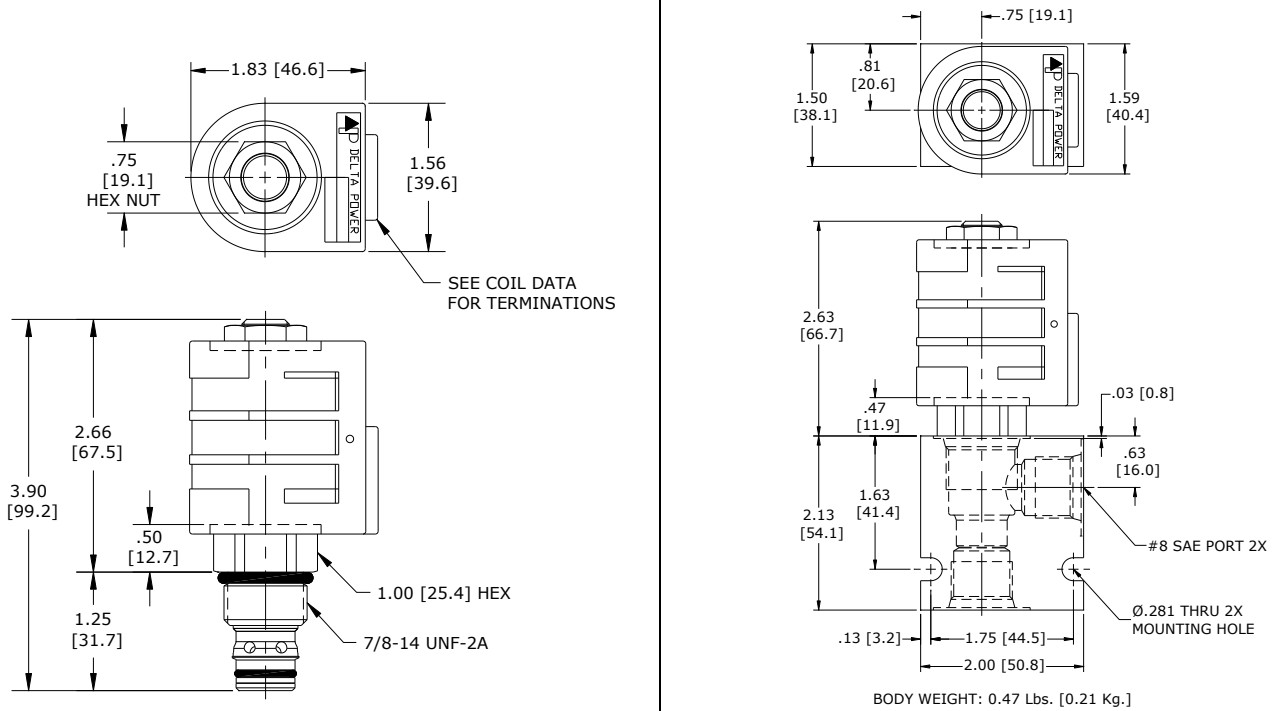
**PERFORMANCE**

Actual Test Data (Cartridge Only)


**VALVE SPECIFICATIONS**

Nominal Flow	20 GPM (75 LPM)
Rated Operating Pressure	4200 PSI (290 bar)
Typical Internal Leakage (150 SSU)	0-5 drops/min
Viscosity Range	36 to 3000 SSU (3 to 647 cSt)
Filtration	ISO 18/16/13
Media Operating Temperature Range	-40° to 250° F (-40° to 120° C)
Weight	0.39 lbs. (0.17 kg)
Operating Fluid Media	General Purpose Hydraulic Fluid
Cartridge Torque Requirements	50 ft-lbs (68 Nm)
Coil Nut Torque Requirements	4-6 ft-lbs (5.4-8.1 Nm)
Cavity	<a href="#">DELTA 2W</a>
Cavity Form Tool (Finishing)	40500000
Seal Kit	21191200

**DIMENSIONS**



**ORDERING INFORMATION**

**HDE-S2A**

**OPTIONS**  
 Buna Standard **00**  
 Viton Standard **V0**

Blank  
**N**  
**S**

**BODIES**  
 Without Body  
 3/8 NPTF Ports  
 #8 SAE Ports

Note: Aluminum **NOT** durability rated for 4200 PSI. Consult factory options.

**VOLTAGE**  
**06** 6 VDC  
**12** 12 VDC  
**24** 24 VDC  
**36** 36 VDC  
**48** 48 VAC  
**25** 25 VAC  
**11** 115 VAC  
**22** 220 VAC  
**44** 440 VAC

**“L” COIL TERMINATION**  
 (All DC Except as Noted)

**DL** Double Lead  
**DT** Deutsch on Leads DT04-2P  
**ML** Metri-Pack on Leads  
**PL** Packard on Leads  
**WL** Weatherpack on Leads

**SS** Single Spade  
**DS** Double Spade  
**HC** DIN 43650 (Hirschman) – (AC & DC)  
**CL** Conduit Lead – (AC Only)  
**DI** Deutsch – Integral DT04-2P

**IMMERSION PROOF “L” TYPE**  
**IA** “I” Coil AMP Superseal - Integral  
**ID** “I” Coil Deutsch – Integral DT04-2P  
**IJ** “I” Coil AMP Jr. Timer - Integral  
**IM** “I” Coil Metri-Pack – Integral

Approximate Coil Weight: .68 lbs. (.31 kg.)

**WARNING:** the specifications/application data shown in our catalogs and data sheets are intended only as a general guide for the product described (herein). Any specific application should not be undertaken without independent study, evaluation, and testing for suitability.