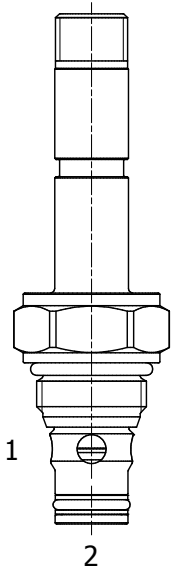


**HPB-S2L PILOTED OPERATED POPPET, 2 WAY NORMALLY CLOSED, BIDIRECTIONAL**

**DESCRIPTION**

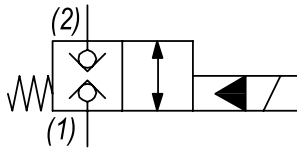
8 size, 3/4-16 thread, "Power" series, solenoid operated, 2 way normally closed, bidirectional poppet valve.

**OPERATION**

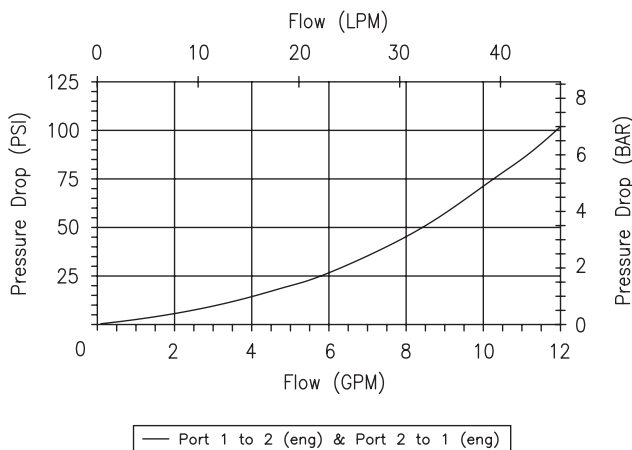
When de-energized the HPB-S2L blocks flow from (1) to (2) and (2) to (1). When energized the valve allows flow from (1) to (2) and (2) to (1).

**FEATURES**

- Hardened parts for long life.
- Efficient wet-armature construction.
- Cartridges are voltage interchangeable.
- Industry common cavity.
- Unitized, molded coil design.
- Continuous duty rated solenoid.
- Optional coil voltages and terminations.
- Optional "I" Coil: Weatherproof, Thermal Shock, Immersion Safe.

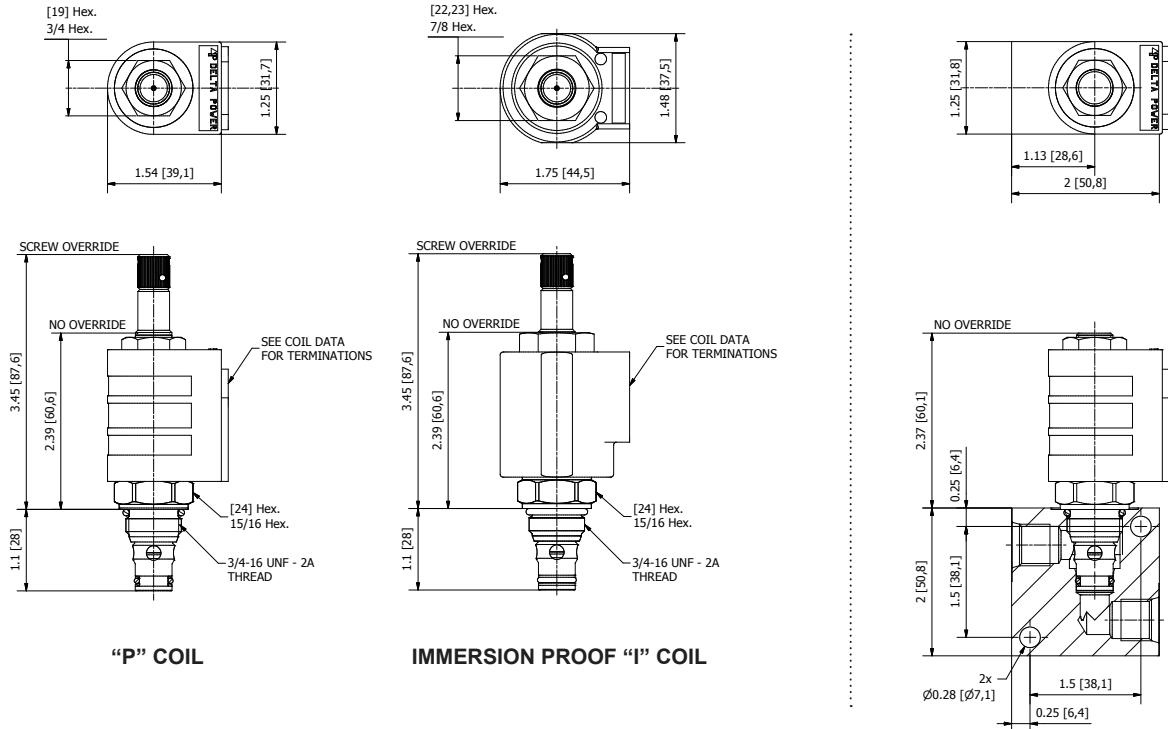
**HYDRAULIC SYMBOL**

**PERFORMANCE**

Actual Test Data (Cartridge Only)


**VALVE SPECIFICATIONS**

Nominal Flow	12 GPM (45 LPM)
Rated Operating Pressure	5000 PSI (345 bar)
Typical Internal Leakage (150 SSU)	0-10 drops/min
Viscosity Range	36 to 3000 SSU (3 to 647 cSt)
Filtration	ISO 18/16/13
Media Operating Temp. Range	-40° to 250°F (-40° to 120°C)
Weight	.26 lbs (.12 kg)
Operating Fluid Media	General Purpose Hydraulic Fluid
Cartridge Torque Requirements	35 ft-lbs (47 Nm)
Coil Nut Torque Requirements	4-6 ft-lbs (5.4-8.1 Nm)
Cavity	POWER 2W
Cavity Tools Kit	40500005
Seal Kit	21191102

DIMENSIONS



ORDERING INFORMATION

HPB - S2L	-	-	-	CONSULT FACTORY FOR BODY
<b>OPTIONS</b>				
Buna Standard	00			
Viton Standard	V0			
Buna, Override	0M			
Viton, Override	VM			
				<b>VOLTAGE</b>
				06 6 VDC
				12 12 VDC
				24 24 VDC
				36 36 VDC
				48 48 VDC
				25 24 VAC
				11 115 VAC
				22 220 VAC
				44 440 VAC

Approximate Coil Weight: .42 lbs (.19 kg)

Note: Aluminum Body Not durability rated for 5000 PSI (345 bar), consult factory for high pressure body options.

Note: use screen only if flow direction is from (1) to (2)

"P" COIL TERMINATION

- DL Double Lead
- DT Deutsch on Leads DT04-2P
- ML Metri-Pack on Leads
- PL Packard on Leads
- WL Weatherpack on Leads

- SS Single Spade
- DS Double Spade
- HC DIN 43650 (Hirschmann) - (AC&DC)
- CL Conduit Lead - (AC Only)
- DI Deutsch - Integral DT04-2P

IMMERSION PROOF "I" COIL TERMINATION

- IA "I" Coil AMP Superseal - Integral
- ID "I" Coil Deutsch - Integral DT04-2P
- IJ "I" Coil AMP Jr. Timer - Integral
- IM "I" Coil Metri-Pack - Integral

For Optional Coil Terminations See Coil Section

WARNING: the specifications/application data shown in our catalogs and data sheets are intended only as a general guide for the product described (herein). Any specific application should not be undertaken without independent study, evaluation, and testing for suitability.