

**HSJ-S2A PILOT OPERATED POPPET, 2 WAY NORMALLY CLOSED**
**DESCRIPTION**

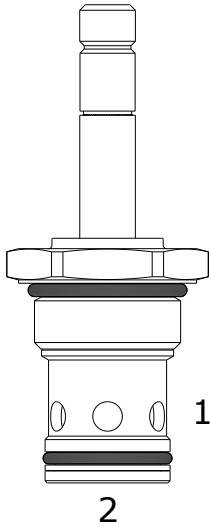
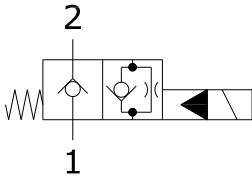
"High Pressure" 16 size, 1 5/16-12 thread, "Sixteen" series, solenoid operated, 2 way normally closed, pilot operated poppet valve with reverse flow de-energized.

**OPERATION**

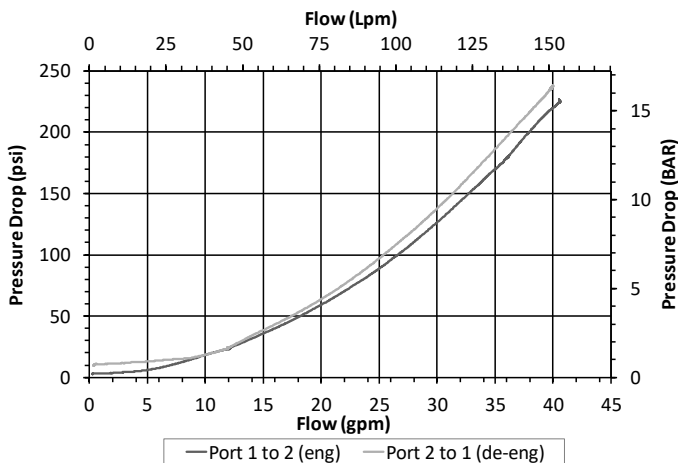
When de-energized the HSJ-S2A blocks flow from (1) to (2) and allows reverse flow from (2) to (1). When energized the valve allows flow from (1) to (2) and restricted flow from (2) to (1).

**FEATURES**

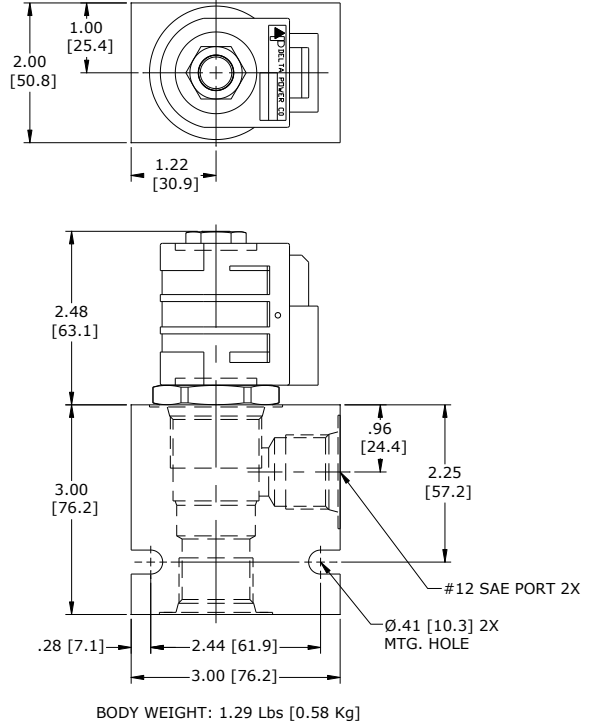
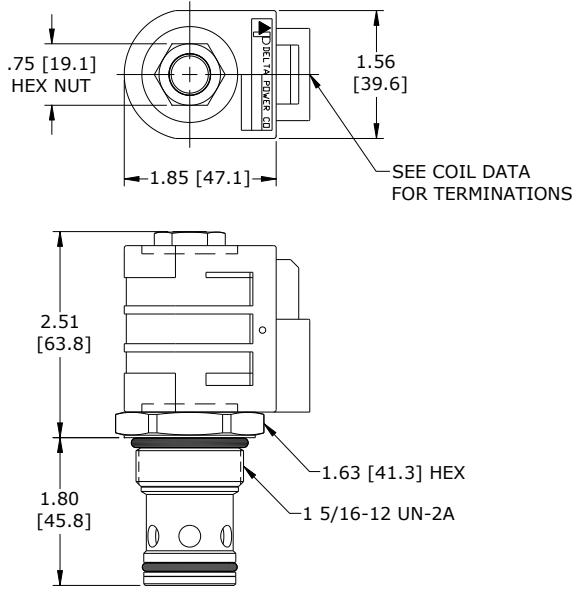
- Hardened parts for long life.
- Efficient wet-armature construction.
- Cartridges are voltage interchangeable.
- Industry common cavity.
- Unitized, molded coil design.
- Continuous duty rated solenoid.
- Optional coil voltages and terminations.


**HYDRAULIC SYMBOL**

**PERFORMANCE**

Actual Test Data (Cartridge Only)


**VALVE SPECIFICATIONS**

Nominal Flow	40 GPM (151 LPM)
Rated Operating Pressure	4200 PSI (290 bar)
Typical Internal Leakage (150 SSU)	0-10 drops/min
Viscosity Range	36 to 3000 SSU (3 to 647 cSt)
Filtration	ISO 18/16/13
Media Operating Temperature Range	-40° to 250° F (-40° to 120° C)
Weight	0.72 lbs. (0.32 kg)
Operating Fluid Media	General Purpose Hydraulic Fluid
Cartridge Torque Requirements	115 ft-lbs (156 Nm)
Coil Nut Torque Requirements	4-6 ft-lbs (5.4-8.1 Nm)
Cavity	<a href="#">SIXTEEN 2W</a>
Cavity Form Tool (Finishing)	40500017
Seal Kit	21191400

**DIMENSIONS**

**ORDERING INFORMATION**
**HSJ-S2A - - - -**

**OPTIONS**  
 Buna Standard **00**  
 Viton Standard **V0**

**BODIES**  
 Without Body  
 3/4 NPT Ports  
 #12 SAE Ports

**VOLTAGE**  
**06** 6 VDC  
**12** 12 VDC  
**24** 24 VDC  
**36** 36 VDC  
**48** 48 VDC  
**25** 24 VAC  
**11** 115 VAC  
**22** 220 VAC  
**44** 440 VAC

Note: Aluminum **NOT** durability rated for 4200 PSI. Consult factory for options.

**“D” COIL TERMINATION**  
 (All DC Except as Noted)

<b>DL</b> Double Lead	<b>SS</b> Single Spade
<b>DT</b> Deutsch on Leads DT04-2P	<b>DS</b> Double Spade
<b>ML</b> Metri-Pack on Leads	<b>HC</b> DIN 43650 (Hirschman) – (AC & DC)
<b>PL</b> Packard on Leads	<b>CL</b> Conduit Lead – (AC Only)
<b>WL</b> Weatherpack on Leads	<b>DI</b> Deutsch – Integral DT04-2P

Approximate Coil Weight: .74 lbs (.33 kg.)

**WARNING:** the specifications/application data shown in our catalogs and data sheets are intended only as a general guide for the product described (herein). Any specific application should not be undertaken without independent study, evaluation, and testing for suitability.