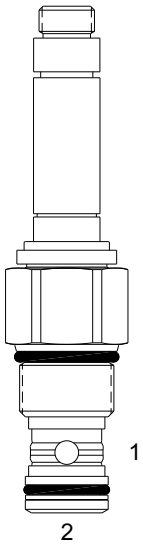


HTT-S2A PILOT OPERATED POPPET, 2 WAY NORMALLY CLOSED

DESCRIPTION

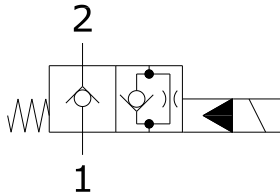
"High Pressure" 12 size, 1 1/16-12 thread, "Twelve" series, solenoid operated, 2 way normally closed, pilot operated poppet valve with reverse flow de-energized.

OPERATION

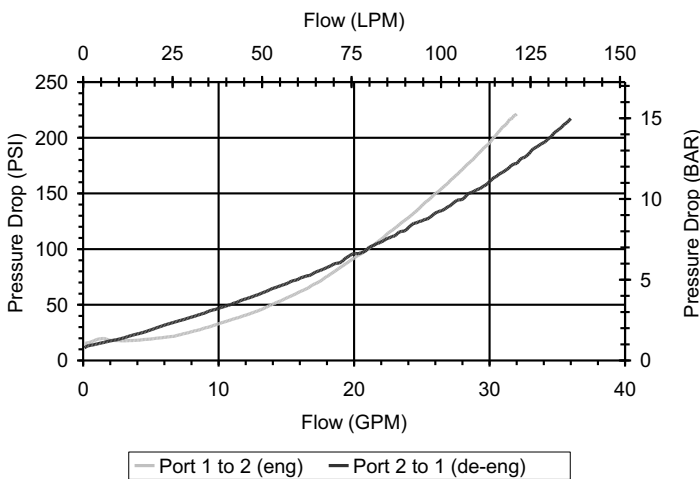
When de-energized the HTT-S2A blocks flow from (1) to (2) and allows reverse flow from (2) to (1). When energized the valve allows flow from (1) to (2) and restricts flow from (2) to (1).

FEATURES

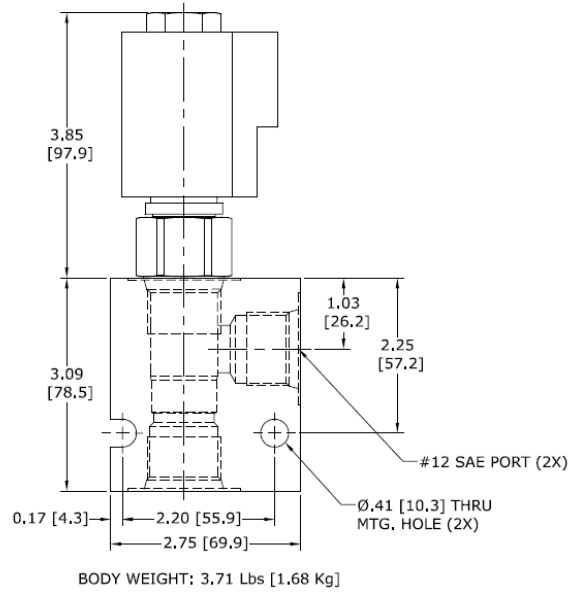
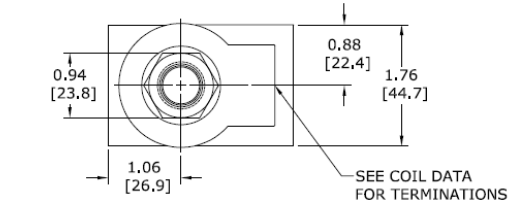
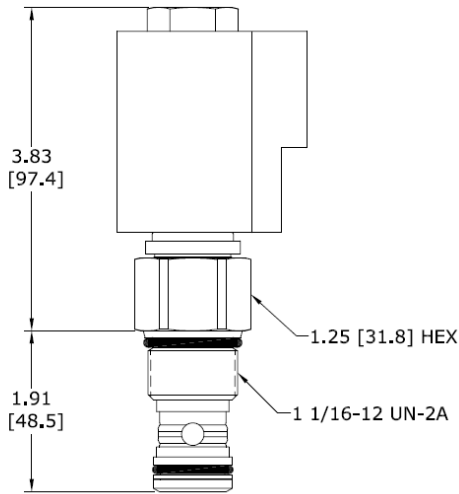
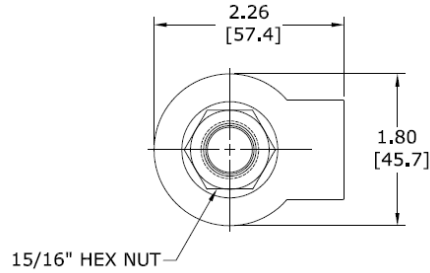
- Hardened parts for long life.
- Efficient wet-armature construction.
- Cartridges are voltage interchangeable.
- Industry common cavity.
- Unitized, molded coil design.
- Continuous duty rated solenoid.
- Optional coil voltages and terminations.
- Optional "I" Coil: Weatherproof, Thermal Shock, Immersion Safe

HYDRAULIC SYMBOL

PERFORMANCE

Actual Test Data (Cartridge Only)


VALVE SPECIFICATIONS

Nominal Flow	25 GPM (95 LPM)
Rated Operating Pressure	5000 PSI (345 bar)
Typical Internal Leakage (150 SSU)	0-8 drops/min
Viscosity Range	36 to 3000 SSU (3 to 647 cSt)
Filtration	ISO 18/16/13
Media Operating Temperature Range	-40° to 250° F (-40° to 120° C)
Weight	0.94 lbs. (0.43 kg)
Operating Fluid Media	General Purpose Hydraulic Fluid
Cartridge Torque Requirements	90 ft-lbs (122 Nm)
Coil Nut Torque Requirements	5-7 ft-lbs (6.8-9.5 Nm)
Cavity	TWELVE 2W
Cavity Form Tool (Finishing)	40500032
Seal Kit	21191301

DIMENSIONS

ORDERING INFORMATION
HTT-S2A
OPTIONS

Buna Standard **00**
 Viton Standard **V0**
 Buna, Screen **A0**
 Viton, Screen **W0**

Blank **S**
 #12 SAE Ports

Note: Use screen only if flow direction is from (1) to (2).

"T" COIL TERMINATION

(All DC Except as Noted)

Double Lead **DL**
 Deutsch on Leads **DT**
 Metri-Pack on Leads **ML**
 Packard on Leads **PL**
 Weatherpak on Leads **WL**
 Double Spade **DS**
 DIN 43650 (Hirschman) – (AC/DC) **HC**

IMMERSION PROOF "T" TYPE

IA "I" Coil AMP Superseal - Integral
ID "I" Coil Deutsch – Integral DT04-2P

VOLTAGE

06 6 VDC
12 12 VDC
24 24 VDC
36 36 VDC
48 48 VDC
25 24 VAC
11 115 VAC
22 220 VAC

Approximate Coil Weight: .89 lbs/.41 kg.

WARNING: the specifications/application data shown in our catalogs and data sheets are intended only as a general guide for the product described (herein). Any specific application should not be undertaken without independent study, evaluation, and testing for suitability.