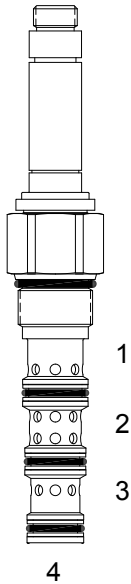


HV-S4E DIRECT ACTING SPOOL, 4 WAY 2 POSITION, SERIES/PARALLEL

DESCRIPTION

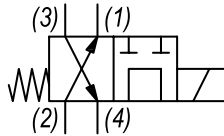
"High pressure" 12 size, 1 1/16-12 thread, "TWELVE" series, solenoid operated, 4 way 2 position, series/parallel flow spool valve.

OPERATION

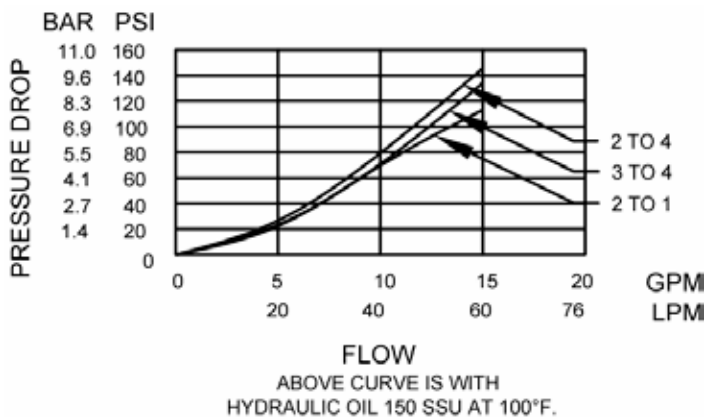
When de-energized the HV-S4E allows flow from (2) to (1) and from (3) to (4). When energized the valve allows flow from (2) to (4) and blocks flow at (1) to (3).

FEATURES

- Hardened parts for long life.
- Efficient wet-armature construction.
- Cartridges are voltage interchangeable.
- Industry common cavity.
- Unitized, molded coil design.
- Continuous duty rated solenoid.
- Optional coil voltages and terminations.

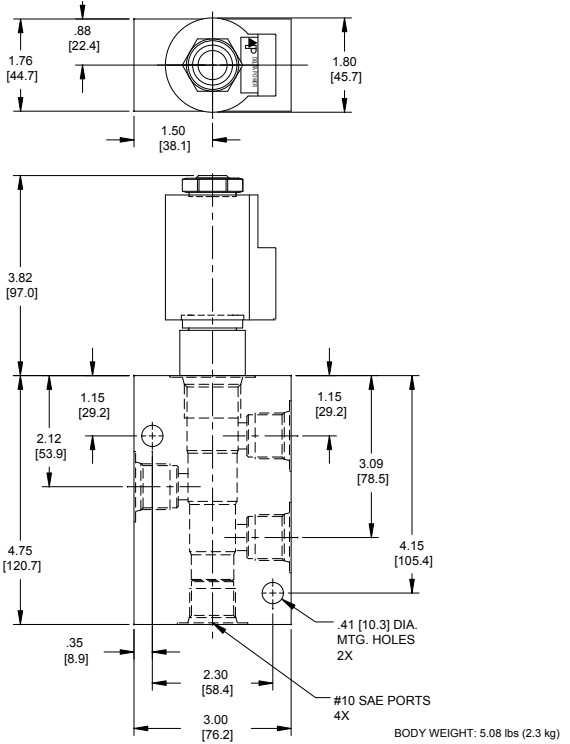
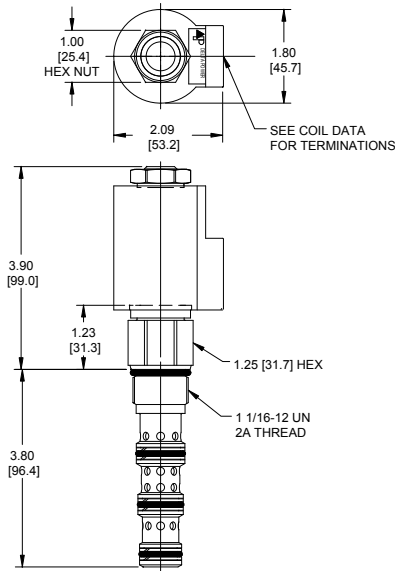
HYDRAULIC SYMBOL

PERFORMANCE

Actual Test Data (Cartridge Only)


VALVE SPECIFICATIONS

Nominal Flow	15 GPM (57 LPM) from (2) to (4) 8 GPM (30 LPM) from (4) to (2)
Rated Operating Pressure	5000 PSI (345 bar)
Typical Internal Leakage (150 SSU)	8 cu in/min (131 ml/min) per path
Viscosity Range	36 to 3000 SSU (3 to 647 cSt)
Filtration	ISO 18/16/13
Media Operating Temp. Range	-40° to 250°F (-40° to 120°C)
Weight	1.09 lbs (.49 kg)
Operating Fluid Media	General Purpose Hydraulic Fluid
Cartridge Torque Requirements	70 ft-lbs (94.9 Nm)
Coil Nut Torque Requirements	5-7 ft-lbs (6.8-9.5 Nm) Maximum
Cavity	TWELVE 4W
Cavity Tools Kit	
(form tool, reamer, tap)	40500035
Seal Kit	21191309

DIMENSIONS



ORDERING INFORMATION

Approximate Coil Weight: .89 lbs (.41 kg)

HV-S4E

OPTIONS

- Buna Standard **00**
- Viton Standard **V0**

BODIES

- Blank Without Body
- S** #10 SAE Ports

VOLTAGE

- 06** 6 VDC
- 12** 12 VDC
- 24** 24 VDC
- 36** 36 VDC
- 48** 48 VDC
- 25** 24 VAC
- 11** 120 VAC
- 22** 220 VAC

"T" COIL TERMINATION

(All DC Except as Noted)

- Double Lead **DL**
- Deutsch on Leads **DT**
- Metri-Pack on Leads **ML**
- Packard on Leads **PL**
- Weatherpack on Leads **WL**
- Double Spade **DS**
- DIN 43650 (Hirschmann) - (AC&DC) **HC**

WARNING: the specifications/application data shown in our catalogs and data sheets are intended only as a general guide for the product described (herein). Any specific application should not be undertaken without independent study, evaluation, and testing for suitability.