

**VQ-S4Q DIRECT ACTING SPOOL, 4 WAY 3 POSITION, CLOSED CENTER**



**DESCRIPTION**

Low Profile 8 size, 3/4-16 thread, "Power" series, solenoid operated, 4W3P, closed center spool valve.

**OPERATION**

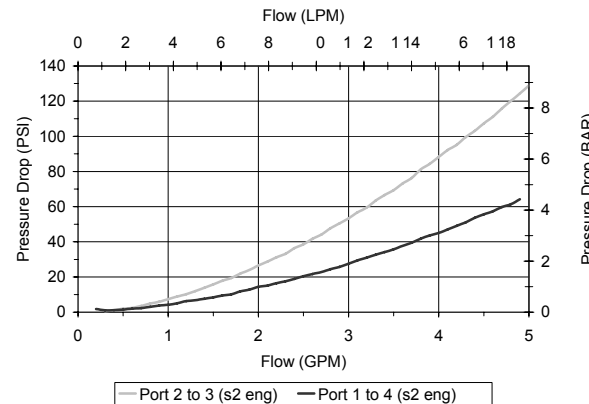
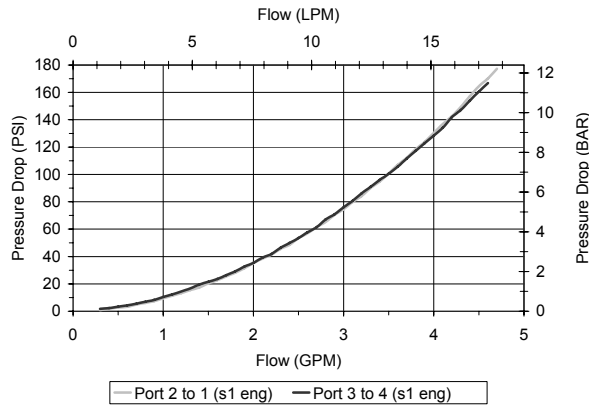
When de-energized the VQ-S4Q blocks flow to all ports. When outer coil (S1) is energized the valve allows flow from (2) to (1) and from (3) to (4). When inner coil (S2) is energized the valve allows flow from (2) to (3) and from (1) to (4).

**FEATURES**

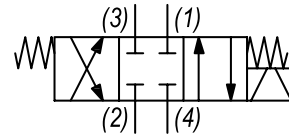
- Hardened parts for long life.
- Efficient wet-armature construction.
- Cartridges are voltage interchangeable.
- Industry common cavity.
- Unitized, molded coil design.
- Continuous duty rated solenoid.
- Optional coil voltages and terminations.
- Optional "I" Coil: Weatherproof, Thermal Shock, Immersion Safe.

**PERFORMANCE**

Actual Test Data (Cartridge Only)



**HYDRAULIC SYMBOL**



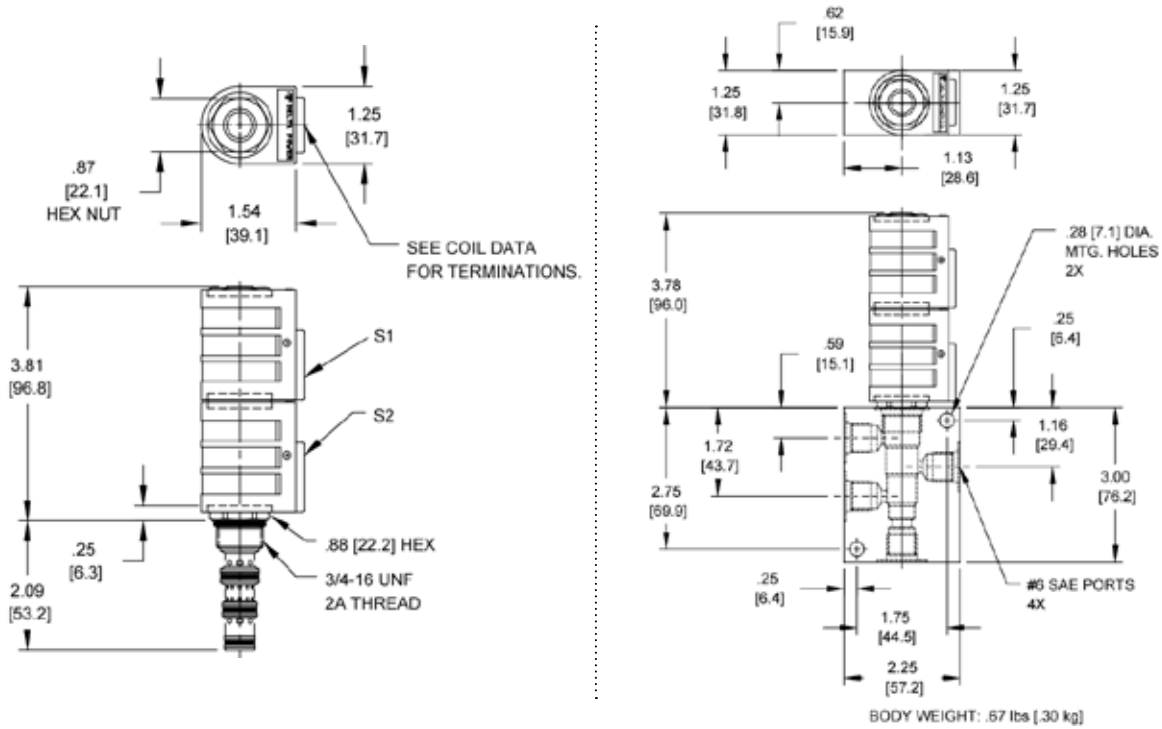
**VALVE SPECIFICATIONS**

|                                    |                                   |
|------------------------------------|-----------------------------------|
| Nominal Flow                       | 3.5 GPM (13.2 LPM)                |
| Rated Operating Pressure           | 3000 PSI (207 bar)                |
| Typical Internal Leakage (150 SSU) | 10 cu in/min (63 ml/min) per path |
| Viscosity Range                    | 36 to 3000 SSU (3 to 647 cSt)     |
| Filtration                         | ISO 18/16/13                      |
| Media Operating Temp. Range        | -40° to 250°F (-40° to 120°C)     |
| Weight                             | .42 lbs (.19 kg)                  |
| Operating Fluid Media              | General Purpose Hydraulic Fluid   |
| Cartridge Torque Requirements      | 25 ft-lbs (34 Nm)                 |
| Coil Nut Torque Requirements       | 4-6 ft-lbs (5.4-8.1 Nm)           |
| Cavity                             | POWER 4W                          |
| Cavity Form Tool (Finishing)       | 40500029                          |
| Seal Kit                           | 21191108                          |

**WARNING:** the specifications/application data shown in our catalogs and data sheets are intended only as a general guide for the product described (herein). Any specific application should not be undertaken without independent study, evaluation, and testing for suitability.

W/44/12-2022

**DIMENSIONS**



**ORDERING INFORMATION**

Approximate Coil Weight: .42 lbs (.19 kg)

|                |           |   |   |               |                |
|----------------|-----------|---|---|---------------|----------------|
| <b>VQ-S4Q</b>  |           | - | - | -             | -              |
| <b>OPTIONS</b> |           |   |   |               |                |
| Buna Standard  | <b>00</b> |   |   |               |                |
| Viton Standard | <b>V0</b> |   |   |               |                |
|                |           |   |   | <b>BODIES</b> |                |
|                |           |   |   | Blank         | Without Body   |
|                |           |   |   | <b>N</b>      | 1/4 NPTF Ports |
|                |           |   |   | <b>S</b>      | #6 SAE Ports   |
|                |           |   |   |               | <b>VOLTAGE</b> |
|                |           |   |   | <b>06</b>     | 6 VDC          |
|                |           |   |   | <b>12</b>     | 12 VDC         |
|                |           |   |   | <b>24</b>     | 24 VDC         |
|                |           |   |   | <b>36</b>     | 36 VDC         |
|                |           |   |   | <b>48</b>     | 48 VDC         |
|                |           |   |   | <b>25</b>     | 24 VAC         |
|                |           |   |   | <b>11</b>     | 115 VAC        |
|                |           |   |   | <b>22</b>     | 220 VAC        |
|                |           |   |   | <b>44</b>     | 440 VAC        |

**"P" COIL TERMINATION**  
(All DC Except as Noted)

- DL** Double Lead
- DT** Deutsch on Leads DT04-2P
- ML** Metri-Pack on Leads
- PL** Packard on Leads
- WL** Weatherpack on Leads

- SS** Single Spade
- DS** Double Spade
- HC** DIN 43650 (Hirschmann) - (AC&DC)
- CL** Conduit Lead - (AC Only)
- DI** Deutsch - Integral DT04-2P

- IMMERSION PROOF "P" TYPE**
- IA** "I" Coil AMP Superseal - Integral
  - ID** "I" Coil Deutsch - Integral DT04-2P
  - IJ** "I" Coil AMP Jr. Timer - Integral
  - IM** "I" Coil Metri-Pack - Integral

**WARNING:** the specifications/application data shown in our catalogs and data sheets are intended only as a general guide for the product described (herein). Any specific application should not be undertaken without independent study, evaluation, and testing for suitability.