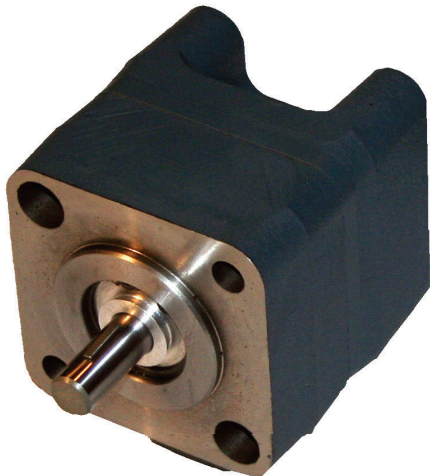


*DM Series Hydraulic Motor*

DM1 thru DM8 Series



DM21 thru DM27 Series

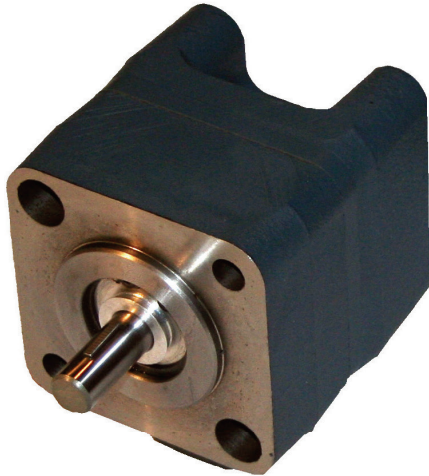


SECTION INDEX

Description	Page
DM Series Hydraulic Motors .....	26
DM1-DM8 Hydraulic Motor, Bi-Directional .....	27
DM21-DM27 Hydraulic Motor, Bi-Directional .....	29

### **DM Series Hydraulic Motor**

**DM1 thru DM8 Series**



*4F17 Mtg.  
Shown*

**DM21 thru DM27 Series**



*4F17 Mtg.  
Shown*

DM Series hydraulic motors are designed with performance in mind, including: High-strength cast iron bodies with precision machined filling and trapping grooves, and hardened alloy gears and shafts to run smoothly, special Buna-N o-ring and shaft seals to withstand up to 200 PSI return line back pressure, anti-friction bearings for 60-70% starting torque, ball thrust bearings to withstand thrust and radial shaft loads, and integral check valves to permit bi-directional rotation (to eliminate the need for external case drains). And, they will turn as slow as 300 rpm...or lower on low-torque applications.

DM Series motors are found in material handling equipment, agricultural implements, snow removal equipment, marine gear and numerous industrial equipment and machine tools...as drives for pumps, fans, compressors, mowers and other applications where moderate starting torque and moderate to high speed efficiency is needed.

And, because of their design and manufacturing quality, they can be expected to add to the overall performance and life expectancy of the equipment.

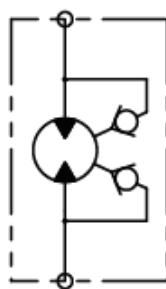
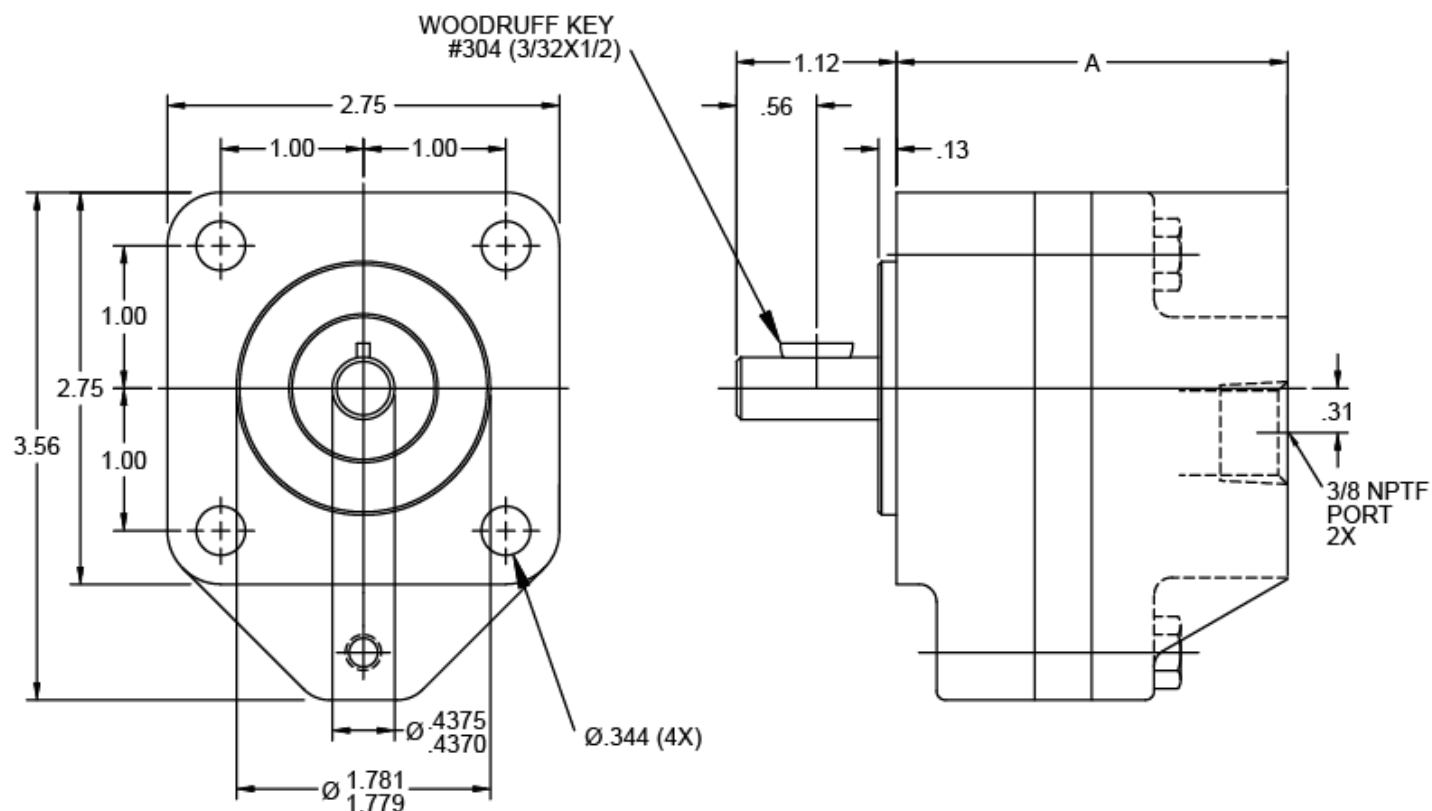
#### **Installation Notes:**

Hydraulic motor controls should be placed on the pressure side of the motor in order to preclude high seal or case pressures. Return line should be straight to tank.

On DM1 thru DM8 series, be especially careful since these units require that the mounting bolts are installed to complete the assembly. The two shipping bolts are not sufficient to make the assembly intact and care should be exercised while handling in this condition. Bolt torque requirements are 13 to 17 ft-lbs.

**WARNING:** The specifications/application data shown in our catalogs and data sheets are intended only as a general guide for the product described (herein). Any specific application should not be undertaken without independent study, evaluations, and testing for suitability.

PHONE: (815) 397-6628 | FAX: (815) 397-2526 | WEB: [www.delta-power.com](http://www.delta-power.com) | EMAIL: [delta@delta-power.com](mailto:delta@delta-power.com)

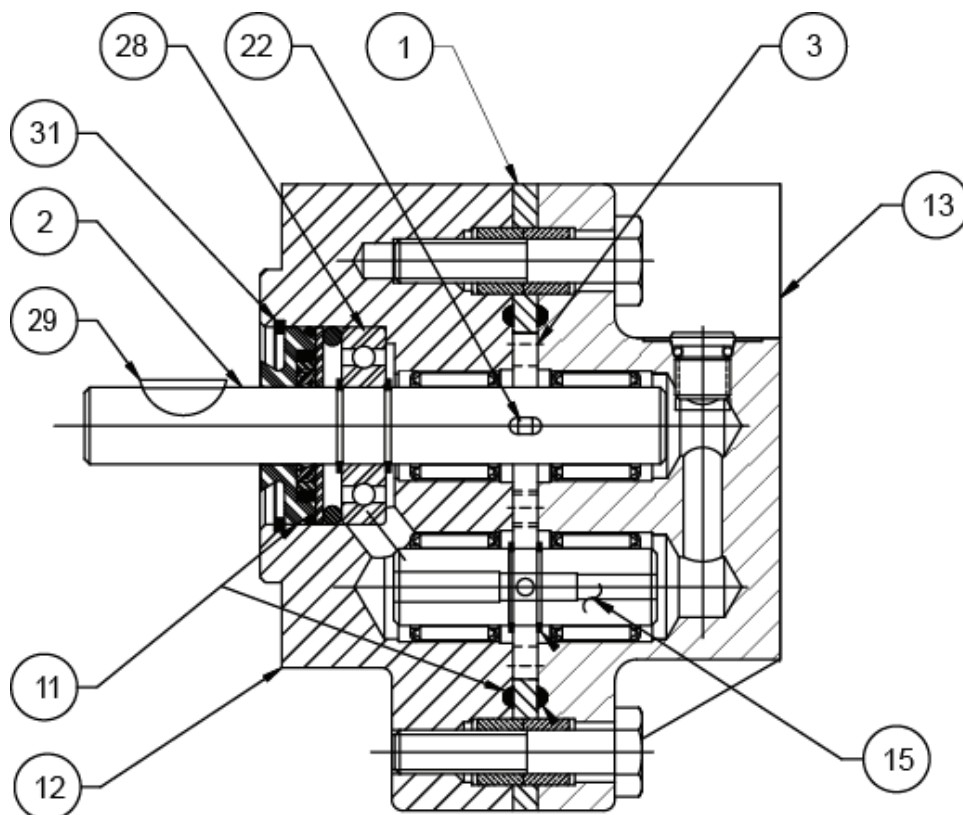
**DM1-DM8 Hydraulic Motor, Bi-Directional**

HYDRAULIC SCHEMATIC

MODEL	0 PSI DISP. GAL./REV,	DISP. IN./REV.	CU. IN./REV.	SLIP GPM PER 100 PSI	THEORETICAL TORQUE IN.LBS./100 PSI	APPROX. TORQUE LOSS IN.LBS./1000 RPM	MAX. CONT PSI	MAX. SPEED RPM	A
DM1	0.00028	0.065		0.015	1.05	0.37	1500	4000	2.82
DM2	0.00047	0.108		0.017	1.75	0.61	1500	4000	2.91
DM4	0.00081	0.187		0.020	2.00	1.00	1500	4000	3.08
DM6	0.00137	0.316		0.025	5.10	1.80	950	3000	3.36
DM8	0.00202	0.468		0.030	7.50	2.60	650	3000	3.68

**WARNING:** The specifications/application data shown in our catalogs and data sheets are intended only as a general guide for the product described (herein). Any specific application should not be undertaken without independent study, evaluations, and testing for suitability.

PHONE: (815) 397-6628 | FAX: (815) 397-2526 | WEB: [www.delta-power.com](http://www.delta-power.com) | EMAIL: [delta@delta-power.com](mailto:delta@delta-power.com)

**DM1-DM8 Hydraulic Motor, Bi-Directional**

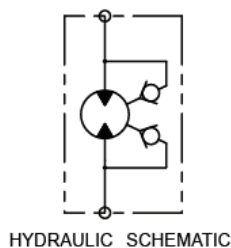
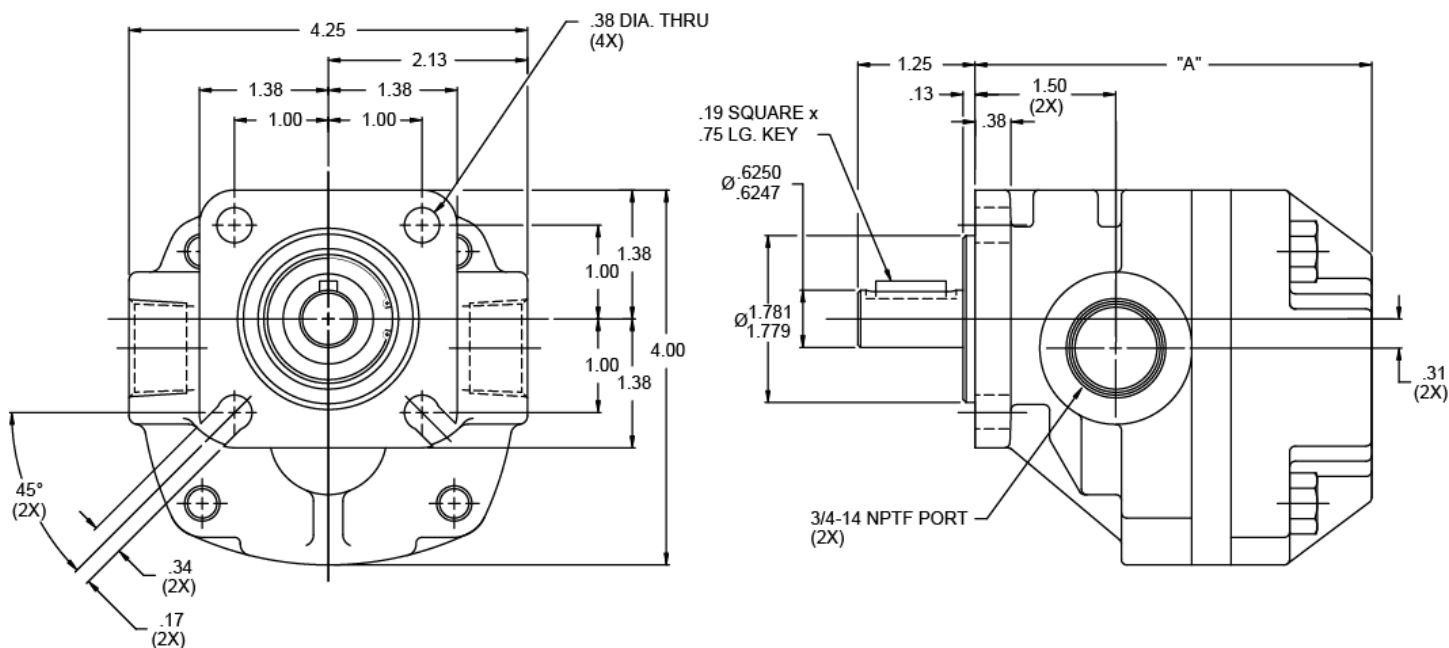
SECTION A-A

ITEM #	DESCRIPTION	QTY.
1	GEAR CASE	1
2	DRIVE SHAFT	1
3	GEAR	1
11	SEAL KIT	1
12	DRIVE PLATE ASS'Y	1
13	END PLATE ASS'Y	1
15	IDLER SHAFT ASS'Y	1
22	GEAR PIN	1
28	OUTBOARD BEARING	1
29	DRIVE KEY	1
31	SNAP RING	1

**WARNING:** The specifications/application data shown in our catalogs and data sheets are intended only as a general guide for the product described (herein). Any specific application should not be undertaken without independent study, evaluations, and testing for suitability.

PHONE: (815) 397-6628 | FAX: (815) 397-2526 | WEB: [www.delta-power.com](http://www.delta-power.com) | EMAIL: [delta@delta-power.com](mailto:delta@delta-power.com)

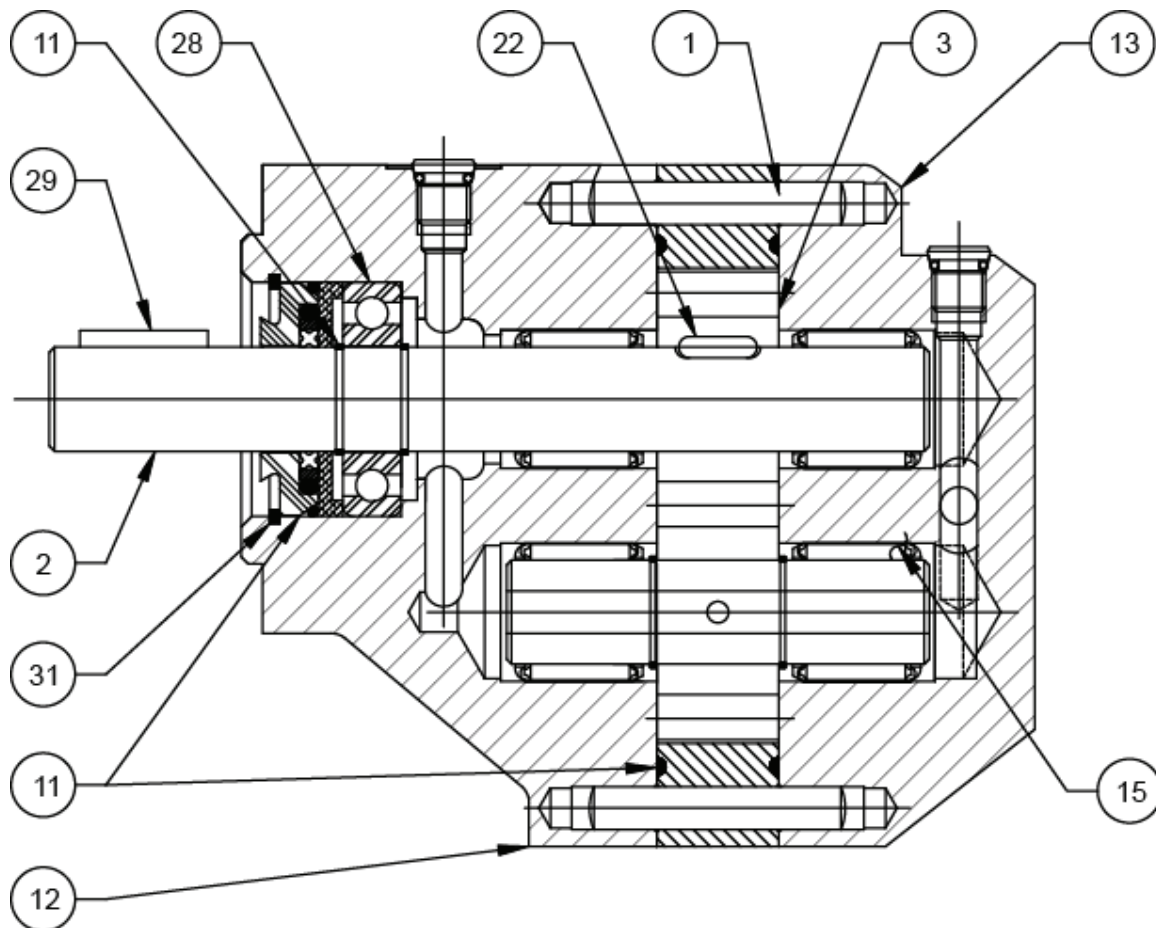
## DM21-DM27 Hydraulic Motor, Bi-Directional



MODEL	0 PSI DISP. GAL./REV.	DISP. CU. IN./REV.	SLIP	GPM/100 PSI	THEORETICAL TORQUE IN.LBS./100 PSI	APPROX. TORQUE LOSS IN.LBS./1000 RPM	MAX. CONT. PSI	MAX. SPEED RPM	A
DM21	0.00178	0.411	0.060		6.5	2.3	1500	3000	4.25
DM23	0.00304	0.702	0.068		11.1	3.9	1200	3000	4.53
DM25	0.00425	0.981	0.083		15.6	5.5	850	2500	4.81
DM27	0.00633	1.460	0.113		23.2	8.1	550	2000	5.31

**WARNING:** The specifications/application data shown in our catalogs and data sheets are intended only as a general guide for the product described (herein). Any specific application should not be undertaken without independent study, evaluations, and testing for suitability.

PHONE: (815) 397-6628 | FAX: (815) 397-2526 | WEB: [www.delta-power.com](http://www.delta-power.com) | EMAIL: [delta@delta-power.com](mailto:delta@delta-power.com)

**DM21-DM27 Hydraulic Motor, Bi-Directional**

SECTION A-A

ITEM #	DESCRIPTION	QTY.
1	GEAR CASE	1
2	DRIVE SHAFT	1
3	GEAR	1
11	SEAL KIT	1
12	DRIVE PLATE ASS'Y	1
13	END PLATE ASS'Y	1
15	IDLER SHAFT ASS'Y	1
22	GEAR PIN	1
24	RETAINING RING	2
28	OUTBOARD BEARING	1
29	DRIVE KEY	1
31	SNAP RING	1

**WARNING:** The specifications/application data shown in our catalogs and data sheets are intended only as a general guide for the product described (herein). Any specific application should not be undertaken without independent study, evaluations, and testing for suitability.

PHONE: (815) 397-6628 | FAX: (815) 397-2526 | WEB: [www.delta-power.com](http://www.delta-power.com) | EMAIL: [delta@delta-power.com](mailto:delta@delta-power.com)